



LoRa Enabled WATER METER AMR

Model: LoRa

Technology: LoRaWAN[®] sensor based

Communication: Wireless

Datasheet 1.0



Table of Contents

1. Brief Description	2
2. Key Features	3
3. Applications	
4. Specifications	4
4.1 Specifications of meter (AMR)	
4.2 Specifications of battery	
5. Important Notice	5
5.1 Disclaimer	
5.2 Contact Information	

1. Brief Description

A water meter is a scientific instrument for accurate measurement of quantity of water distributed to the consumer and efficient management of urban water supply. It provides real-time data on the volume of water being consumed by a consumer (residential or bulk), thereby encouraging the consumer to use water more efficiently.

In India, mostly conventional mechanical reading meters are being used, a person needs to go to every meter to note down the reading and then he prepares the bill. We (SSTPL) built retrofit LoRa enabled Water Meter AMR and attached on water meters to get automatic meter readings. This water meter AMR send the data to server via LoRaWAN Gateway.



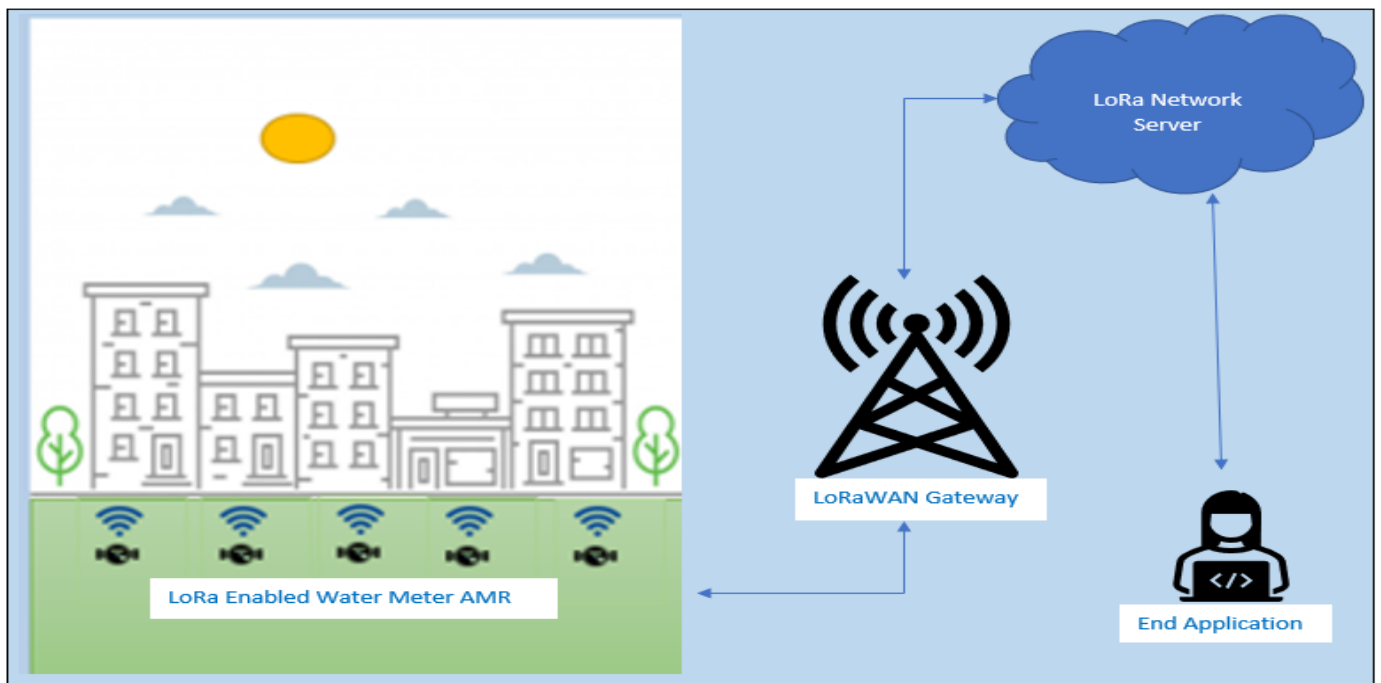
2. Features

- Easy to use and deploy
- Tamper alert
- Long range wireless data transmission
- Removal detection
- Low Maintenance cost
- Water metering
- Configurable data frequency time



3. Applications

- Wireless AMR – Smart metering
- Management of water resource.



4. Specifications

➤ Specifications of (AMR)

Frequency range	865 to 867 MHz
Modulation	LoRa® Spread-Spectrum
RF output power	Up to 20 dBm
Receiver sensitivity	-137 dBm (SF 12; SB 125 kHz, CR 4/6)
RF data rate	0.24 to 5 kbps
RF range	up to 5000 m (line of sight)
Dimension	75mm*58mm*62mm
Rating/Standards	IP65
Battery life	Up to 7 years (Depends on battery)

➤ Specifications of Battery

Cell Type	Primary, non-rechargeable
Chemistry	Lithium Thionyl Chloride
Nominal Voltage	3.6V
Nominal Capacity	2200mAh
Max. Continuous Discharge Current	400mA
Max. Pulse Discharge Current	Up to 800mA (life and temperature dependent)

5. Important Notice

5.1 Disclaimer

SSTPL points out that all information in this document is given on an “as is” basis. No guarantee, neither explicit nor implicit is given for the correctness at the time of publication. SSTPL reserves all rights to make corrections, modifications, enhancements, and other changes to its products and services at any time and to discontinue any product or service without prior notice. It is recommended for customers to refer to the latest relevant information before placing orders and to verify that such information is current and complete. All products are sold and delivered subject to “General Terms and Conditions” of SSTPL, supplied at the time of order acknowledgment.

SSTPL assumes no liability for the use of its products and does not grant any licenses for its patent rights or for any other of its intellectual property rights or third-party rights. It is the customer’s duty to bear responsibility for compliance of systems or units in which products from SSTPL are integrated with applicable legal regulations. Customers should provide adequate design and operating safeguards to minimize the risks associated with customer products and applications. The products are not approved for use in life supporting systems or other systems whose malfunction could result in personal injury to the user. Customers using the products within such applications do so at their own risk

Any reproduction of information in datasheets of SSTPL is permissible only if reproduction is without alteration and is accompanied by all given associated warranties, conditions, limitations, and notices. Any resale of SSTPL products or services with statements different from or beyond the parameters stated by SSTPL for that product/solution or service is not allowed and voids all express and any implied warranties. The limitations on liability in favour of SSTPL shall also affect its employees, executive personnel, and bodies in the same way. SSTPL is not responsible or liable for any such wrong statements.

Copyright © 2021, SSTPL

5.2 Contact Information

Sehaj Synergy Technologies Pvt. Ltd. (SSTPL)
Indu Bhawan, J-9/J-7/3, Bhagwan Marg, Swage Farm,
New Sanganer Road, Sodala, Jaipur-302019, Rajasthan, India
T: +911414017908 M: +91 8890200333 E: marketing@sstpl.net.in Web: www.sstpl.in